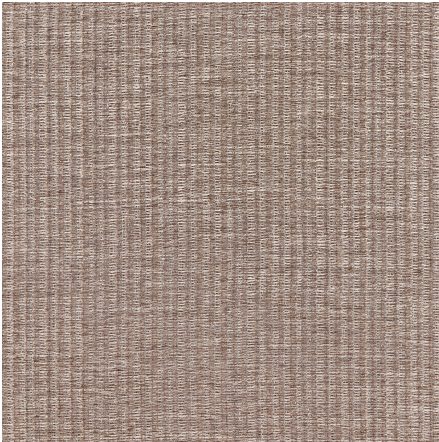




ZIMMER+ROHDE







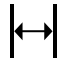


Product data sheet

ALCHEMIST is dedicated to the science of material and its properties. The finely textured Inbetween fabric astonishes with its metallic and elegantly shimmering surface. Legends surround the ancient teachings of alchemy and this beautiful plain fabric seems also to suspend the laws of chemistry. The fine texture of the fabric looks almost like metal had been woven into fabric, or as if fabric has been transformed into metal.

Zimmer + Rohde

Alchemist

| | |
|---------------------------------|--|
| ARTICLENUMBER | 10956884 |
| COLLECTION | Soul Spaces |
| NUMBER OF COLORS | 7 |
| CATEGORY | Fabrics |
| MOTIVE | - |
| FABRIC WIDTH | 315 cm |
| EFFECTIVE WIDTH | - |
| WEIGHT | 165 g/m ² |
| MATERIAL | 62% Polyester, 26% Cotton, 6% Viscose, 6% Flax (linen) |
| MARTINDALE | - |
| CARE INSTRUCTIONS |      |
| ADDITIONAL INFORMATION | - |
| PROPERTIES / USAGE | washable   300 ^{°C} PLUS |
| ACOUSTIC PROTECTION | - |
| LIGHT FASTNESS (EN ISO 105-B02) | 5 |
| DYEING METHOD | yarn dyed |
| PILLING (EN ISO 12945-2) | - |
| RAPPORTWIDTH | - |
| RAPPORTHEIGHT | - |
| MANUFACTURING METHOD | - |